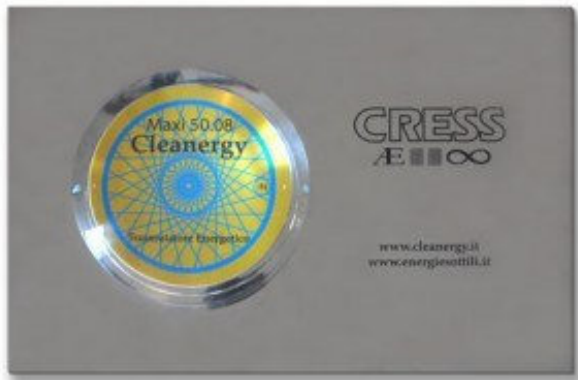


RILEVAMENTO FOTONICO SISTEMI "CLEANERGY"

DANIELE GULLA' - C.T.A. (Consulente Tecnico Ambientale)



MAXY CLEANERGY



ANTENNA ZAMPERINI

TECNOLOGIA UTILIZZATA PER IL RILEVAMENTO:

CAMERA MULTISPETTRALE "FUTURA" RANGE X-EUV – IR AD ALTISSIMA EFFICIENZA QUANTICA

Applicazioni principali

Forensic Medicine - Criminal Evidence - Biology Verification - Art Restoration - Hidden Paintings -
Deteriorated Manuscripts - Biophoton Emission - Morphic Field (AURA) - BioField Energy
Detection - Ghost Capture – F.E.L.

Traduzione dei titoli di sopra in italiano:

Raccolta Prove e Medicina Forensi – Verifiche Biologiche – Restauro di Opere d’Arte – Rivelazione di Dipinti Invisibili – Manoscritti Deteriorati – Emissione di Biofotoni – Campo Morfico [Aura] – Ripresa di Fantasmi – F.E.L. (Fenomeni Energetici Luminosi)

Scientific Imaging



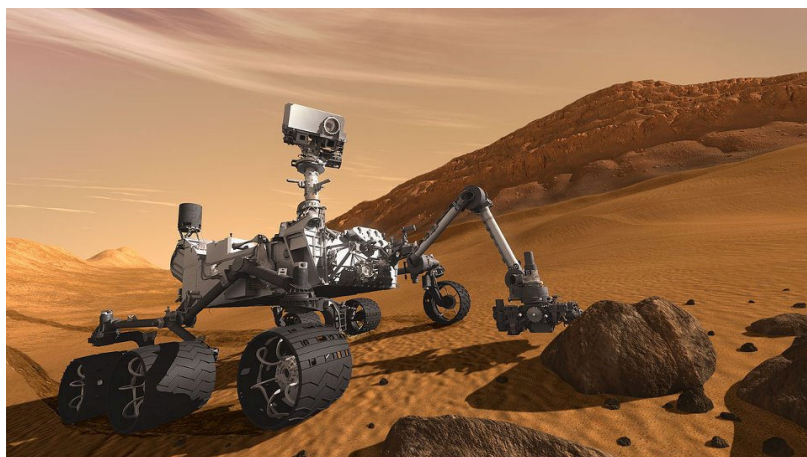
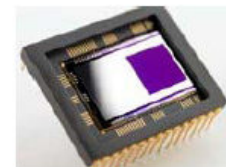
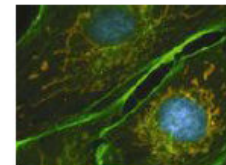
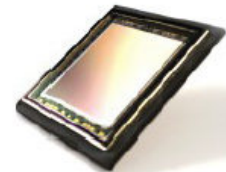
⇒ High resolution scientific applications

⇒ Fluorescence microscopy

⇒ Bio- and chemi-luminescence

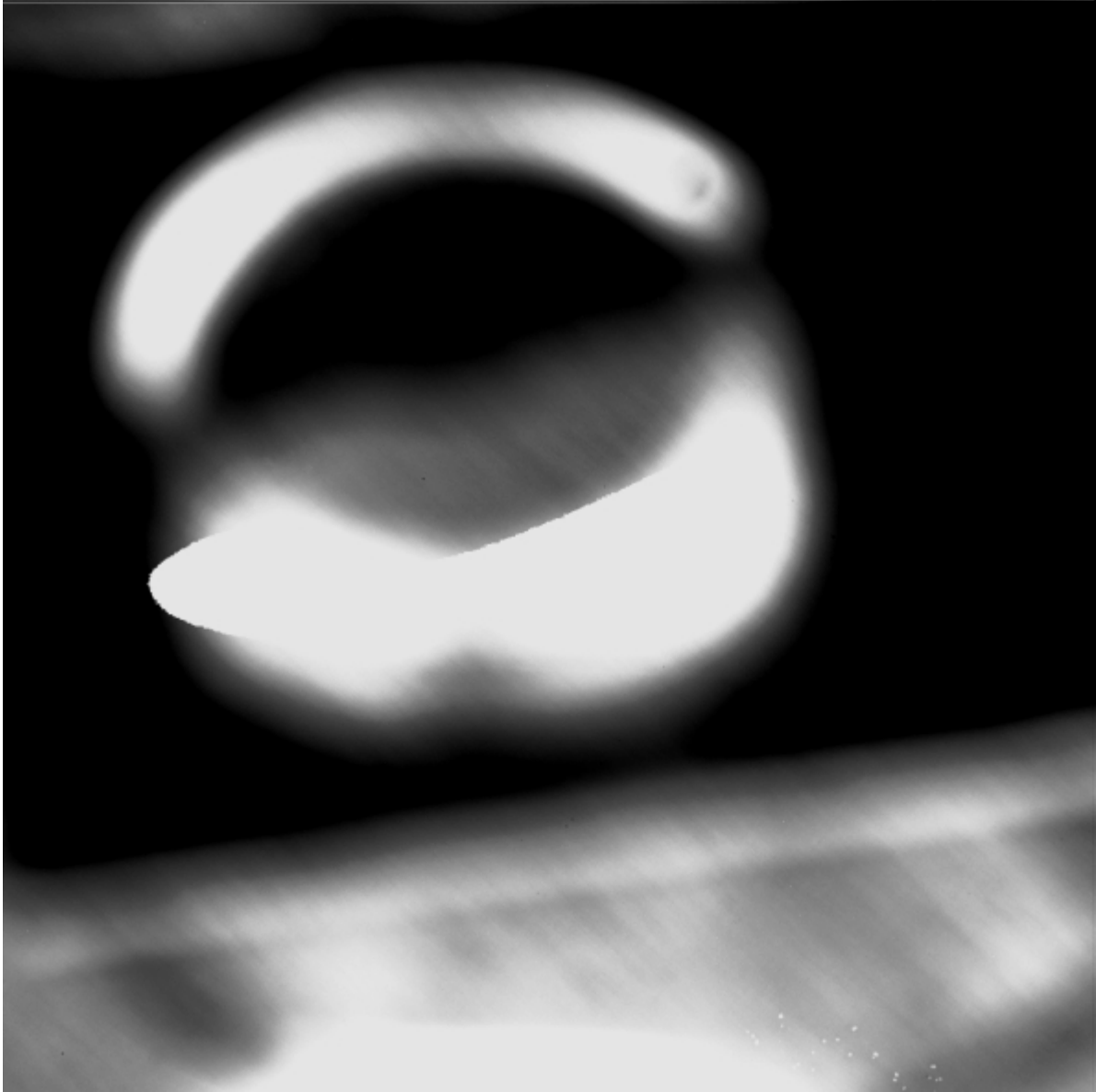
⇒ Life sciences

⇒ Spectroscopy

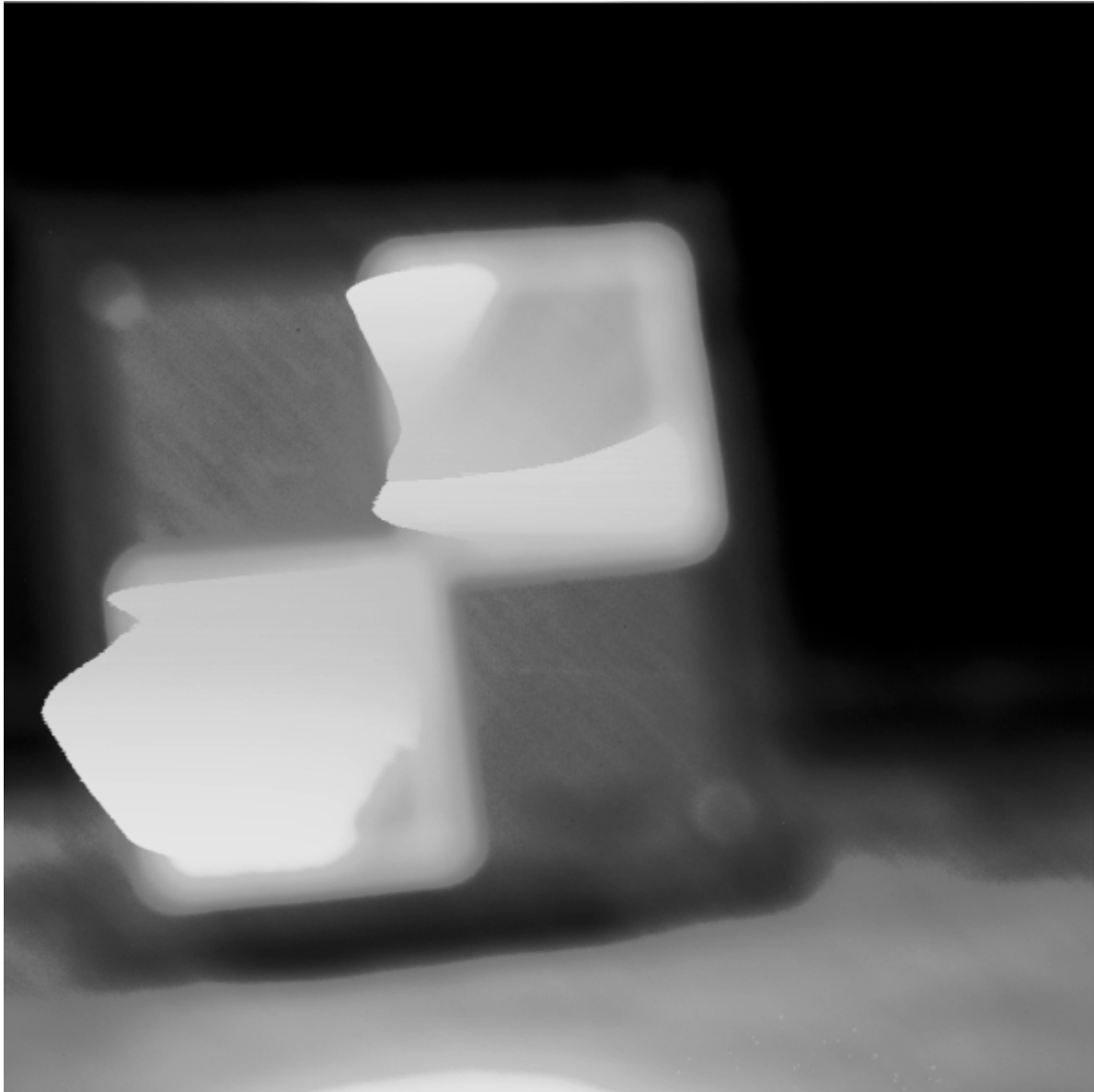


Un gemello del sensore montato su FUTURA è parte integrante del sistema di visione dell’ultima sonda NASA approdata sul pianeta rosso: Marte.

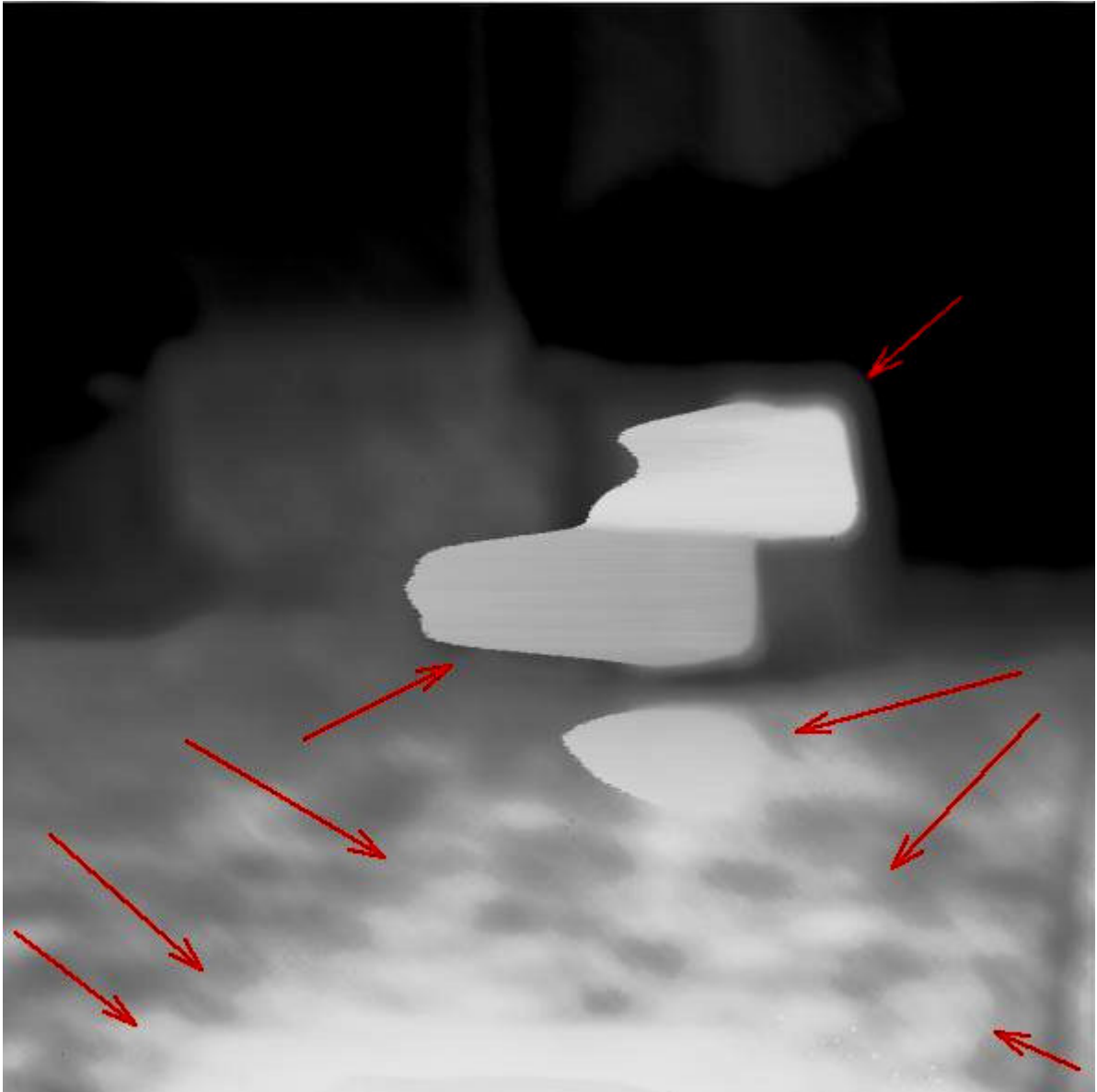
**FOTOGRAFIE IN EUV – EMISSIONE FOTONI IN BANDA “B2”
(220\260 nanometri)**



EMISSIONE FOTONICA EUV - MAXY CLEANERGY (ADU = 36977687.000000)



EMISSIONE FOTONICA EUV - ANTENNA ZAMPERINI (ADU = 19535831.420576)



EMISSIONE A DISTANZA EUV - ANTENNA ZAMPERINI